



2017 Annual Report

Prepared for the Lawrence City Commission

March 6, 2018



www.douglascountyks.org/fpc

About This Report

- This report has been prepared for the City of Lawrence Commission by Helen Schnoes, Douglas County Sustainability & Food Systems Planner, on behalf of the Douglas County Food Policy Council.
- A full or condensed presentation of this report or any of the programs highlighted herein is available to the Commission upon request.
- Contact: Helen Schnoes at hschnoes@douglascountyks.org or (785) 832-5157



The Douglas County Food Policy Council

- Established by the County Commission in 2010
- Convened as a joint City-County Advisory Board in 2013
- Identifies the benefits, challenges and opportunities for a successful food system
- Recommends local policies to support food system
- Represents a wide range of stakeholders in food system



Benefits

Economic vitality

- Profitable agricultural businesses
- Successful food entrepreneurs
- Good jobs and career opportunities

Wellness

- Access to nourishing foods
- Food and gardening skills
- Great tasting local produce

Equity

- Good food for all
- Celebration of diversity
- Empowerment and inclusion

Ecological resilience

- Healthy and abundant soils and waters
- Ability to endure extreme weather events
- Waste reduction and reuse



Douglas Co. Food Policy Council

County-appointed	City-appointed
At-Large (No-till + cattle producer)	At-Large (Health Department)
At-Large (Haskell professor)	At-Large (State Foundation)
At-Large (State policy advocate)	Agricultural Producer (Produce, flowers)
Agricultural Producer (Poultry)	Retail Food Outlet (Restaurant)
Agricultural Producer (OPEN)	Retail Food Outlet (Food entrepreneur)
Agricultural Producer (Farm Bureau)	Sustainability Advisory Board
Retail Food Outlet (Grocer)	Food Security (Just Food)
Institutional Food Purchaser (Lawrence Shelter)	Farmers Market in Douglas County (LFM)
Education (University of Kansas)	Business Community (The Chamber, Lawrence KS)
Extension Service	
NGO- Health/Nutrition/MD	
NGO- Local Food Systems/Sustainable Ag.	
Youth Representative	
Senior Food & Nutrition Programs (JAAA)	



Major 2017 Accomplishments

- Food System Plan Adoption
- Program & Project Transitions
- Launching Plan Implementation
- Recognition



DOUGLAS COUNTY, KS
FOOD SYSTEM
PLAN

Adopted June 28, and July 11, 2017

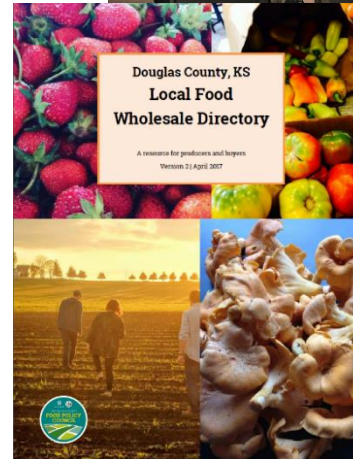
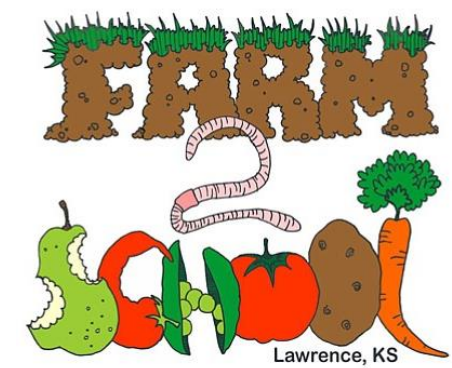


Major Grants Wrap-up

CDC Partnership to Improve Community Health

(2014-2017; \$1.3 million to LDCHD)

- Schools create local food procurement guidelines
 - USDA F2S Planning Grant
 - Continued TA from staff
- New directory adds restaurants, schools
- Collaboration with Sunrise Project instrumental
 - Health Equity workshop
 - KHF HCI funding supporting model for Community Health Plan



Hunger, food insecurity, & access to healthy foods again identified as community priority.



Major Grants Wrap-up



USDA Farmers Market Promotion Program

(2015-2017; \$56,650)

- Final reports released January 2018 with workshop
- Collaborative campaign
 - National Farmers Market Week: [#ShopEatRepeat](#)
 - Farmers Markets of Kaw Valley: www.fmkawvalley.org
- New DCFPC Priority (1.3.1)
 - Help resolve “the location issue” for downtown Lawrence Farmers Market , support promotion



Major Grants Wrap-up



**DOUBLE UP
FOOD BUCKS™**

Double Up Food Bucks

(2016-2019; \$5.8 million bi-state collaboration led by MARC)

- Douglas County management of Eastern Kansas region transitioned to national non-profit Fair Food Network
- County and FPC continue to engage as partner for outreach
 - Support in Food System Plan
- Three local markets still participate in program



Sunflower Foundation
HEALTH CARE FOR KANSANS



SNAP matching is a win-win-win!



low-income families can purchase and eat more healthy foods,



local farmers access new customers and new sources of revenue,



and more dollars stay in **local Kansas communities.**

100% say DUFEB helped them afford more FF&V
87% consumed more FF&V
67% decreased consumption of junk food

Vendors saw an increase of over \$50,000 in revenue across all markets because of SNAP matching

Every \$1 spent at a farmers market can generate up to \$2.80 for the local economy.

Common Ground

- ✓ Utilizes vacant, under-utilized city owned properties.
- ✓ FREE lease to community gardeners, market farmers.
- ✓ WIN-WIN for gardeners and farmers who need land and City staff tired of mowing vacant lots.

Community Partners

- KU Big Event
- KU Super Service Saturday
- Sunrise Youth
- KU Hillel
- Just Food
- Sunrise Project
- KU Super Service Saturday
- KU Center for Community Outreach/Engineers without Borders
- Lawrence Food Garden Tour
- Centenary United Methodist Church
- Lawrence Public Library
- Douglas County Community Foundation
- Growing Food, Growing Health (The Merc)
- GreenWish Lawrence
- Grassland Heritage
- Oread Friends
- K-State Research & Extension
- Douglas County Conservation District



commonground
COMMUNITY GARDEN



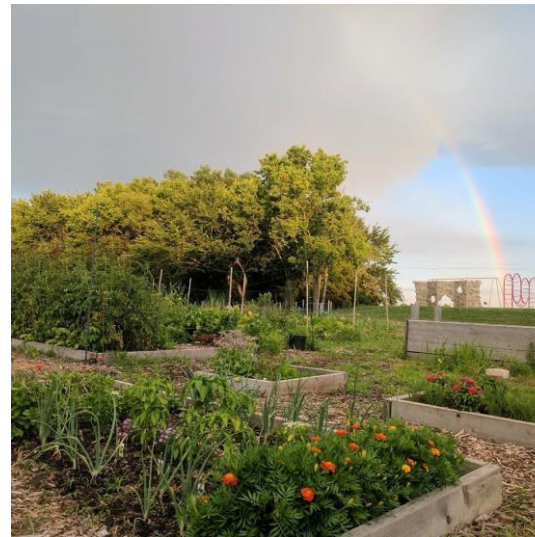
Common Ground

Accomplishments:

- New, simplified application for easier, web-based enrollment
- Incubator Farm success! [Mellowfields Urban Farm](#) “graduates” to Douglas Co. farmland

By the Numbers:

- Gardens/farms: **10**
- Gardeners/farmers: **136**
- Community events & classes: **56**
- Event participants: **598**
- Market value of produce : **\$2,300**
- Pounds of produce donated: **888**



Conservation District Grant

(2017-2018; \$50,000)

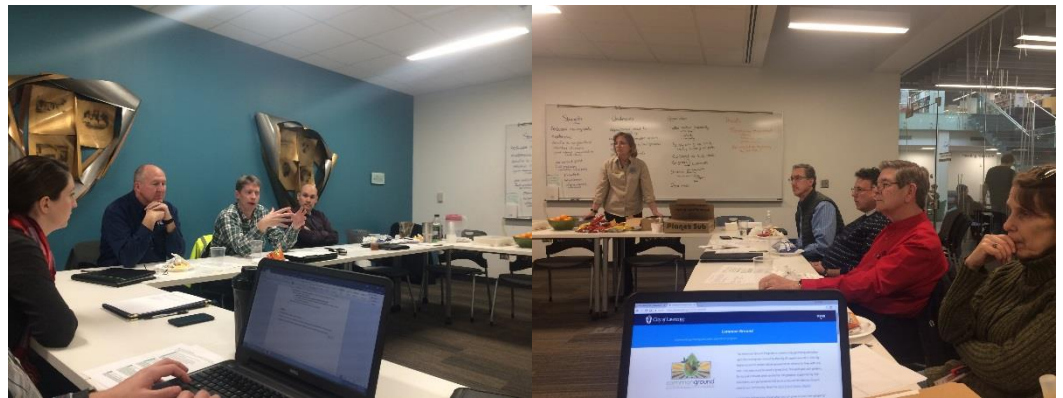
- Research contractor hired for full **Common Ground** program review

Creating new Toolkit for program participants

- Urban Agriculture Education Center at Fairgrounds in partnership with **K-State Research & Extension**

Install high tunnels
(see middle images)

- Collaborative Professional Development



Focus group with City / County staff who support Common Ground



Grant partners travel to Columbia, MO for urban agriculture tour



K-STATE
Research and Extension



2016: FPC TASKED TO WRITE FOOD PLAN

“a strategic plan should be developed by and maintained with the Local Food Policy Council to...ensure the master plan is fitting the true needs of the community.” --Comprehensive Plan Update Steering Committee



**Process
Recap**

Food System Assessment

Winter-
spring 2016

13 Focus Groups

Lawrence Listens Survey
(+450 responses)

Summer-
fall 2016

Identify themes

5 Public Forums

Goals

Fall-winter
2016

January Public
Draft Release

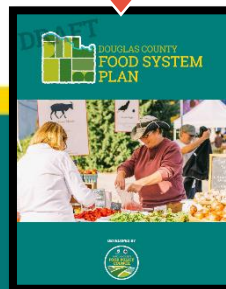
Objectives

March City
Commission

Policies

Winter-
spring 2017

External TA
Review



Adopted July 2017!

Food System Plan

Goal 1: Thriving Regional Food Economy

Goal 2: Conservation & Resilience

Goal 3: Healthy Food Access

Goal 4: Equitable Food System

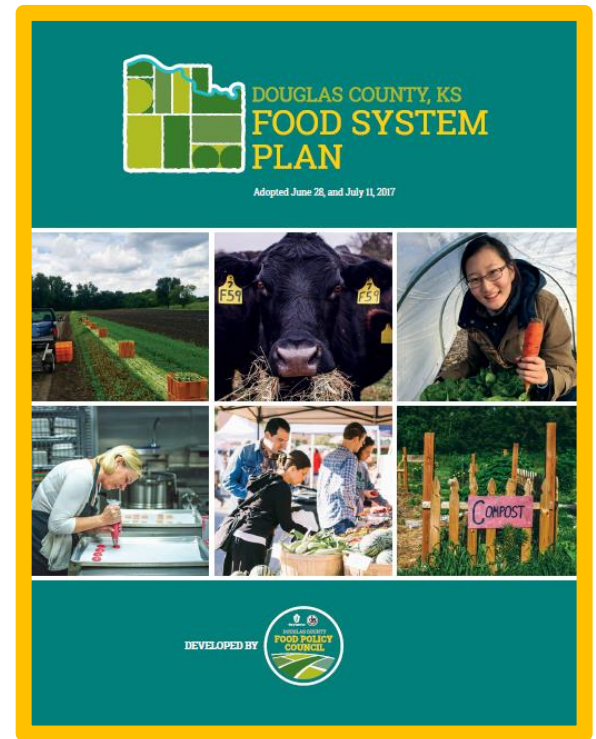
Goal 5: Eliminate Food Waste



<https://www.douglascountyks.org/fpc/food-system-plan>

Food System Plan Implementation

- Role of DCFPC Going forward:
 - Prioritize
 - Clarify responsibility
 - Assess progress
 - Maintain community engagement
 - Ensure accountability



Council 2017 Retreat at White Tail Run Winery in SE Douglas County

New Subcommittees – by Goal

Goal 1: Thriving Regional Food Economy

Aggies

Goal 2: Conservation & Resilience

Goal 3: Healthy Food Access

Health Equity

Goal 4: Equitable Food System

Goal 5: Eliminate Food Waste

FORWARD

Food Recovery, Waste Reduction, & Diversion



<https://www.douglascountyks.org/fpc/food-system-plan>

Snapshot: Some 2018 Priorities



Aggies

Health
Equity

FoRWaRD
Food Recovery, Waste Reduction, & Diversion

- Regional Food Systems Economic Devp. Summit
 - USDA, American Farmland Trust, Federal Reserve Bank
 - Late May 2018!
- Food Access Communications
 - Lawrence Transit, partner agencies
- Support Food Waste Audits at USD497 and KU
 - LDC Health Department funding through KDHE CDRR grant



Research Collaboration Opportunities
Work Group on Food Studies



FPC provided input on draft comp plan

Our Community Vision

The City of Lawrence and rural Douglas County is one of the most desirable places in the United States to call home. A well-educated community with a unique free state spirit, we are diverse, publicly engaged, and boldly innovative. We are prosperous, with full employment and a broad tax base.

Our development is human-scale and our vibrant and liveable neighborhoods allow people to age in place. We have ample choices for safe, efficient transportation including bicycling, walking and transit. The City's lively and historic downtown attracts residents and visitors for commerce and culture. Our citizens value preserving and enhancing the natural environment for our enjoyment and for future generations. The proximity of rural and agricultural land to the city provides beauty and respite, and we enjoy the economic and health benefits of a robust local food system.

We make Lawrence and rural Douglas County a place where creativity thrives, sustainability is a way of life, and community pride is contagious.



E. Local Foods

VISION

Create a robust local food system that enriches producers and consumers and that bolsters our communities' health and resilience.

GOALS

Local foods are a large part of our culture and economy, including producing, buying, and consuming food products. Ensuring **agriculture's role in our community** helps signify its importance in our local economy and shapes our local identity.

1. **Identify and encourage opportunities for growth in local agricultural employment, tax base, and income.**
 - 1.1 Plan in accordance with and implement the Douglas County Food Systems Plan.
 - 1.2 Maintain working lands and prime soils for future generations.
 - 1.3 Plan for the conservation and protection of [high quality agricultural soils](#) as part of [Specific Land Use Plans](#).
 - 1.4 Maintain funding for conservation easements.
 - 1.5 Guide the expansion of local farmers markets throughout the community as feasible.

Providing support for local producers to build new markets helps **promote healthy, local foods** to consumers and spur entrepreneurial opportunities.

2. **Identify and encourage opportunities for growth in local agricultural and entrepreneurial food sectors, including employment, tax base, and income.**
 - 2.1 Maintain economic development support for the development of regional food system infrastructure and value-added agricultural production.
 - 2.2 Plan for equitable healthy, local food access throughout Douglas County.



Photo by A. Shaler Photography



What are Local Foods?

Local food and eating locally means building new markets that connect area producers and consumers, keeping food dollars within our community.

This includes how we produce, buy, eat, and throw away food in Douglas County.



Recognition

- KS State of Wellness Community Health Champion Award
 - *Watch this video!*
- KS-APA Pioneer Award for Food System Plan
- 2017 Sustainable Success Story “10th Anniversary Honoree” by the Mid-American Regional Council
- Webinars, conferences, & news articles



<https://newfoodeconomy.org/local-changes-to-system-food-policy-councils/>



Sustainability Office Changes



New Sustainability Director

- Jasmin Moore, AICP
- Former member of Johnson Co. KS Food Policy Council

Sustainability & Food Systems Planner

- Helen Schnoes, AICP
- Remains primary staff liaison for Council



<https://www.facebook.com/LawrenceandDouglasCountySustainability>

The Council and its accomplishments are indebted to the public service leadership of Eileen Horn as Sustainability Director from 2010-2017.

Stay Connected

- ✓ All Council meetings are open to the public—and our City Commissioners:
 - Full Council: Third Monday each month
 - 6:30pm to 8:30pm
 - *Location varies throughout our county food system*
 - Subcommittees meet monthly
- ✓ Agendas, minutes, reports, and additional info online:
 - <https://www.douglascountyks.org/fpc>
- ✓ Subscribe for monthly agenda announcements:
 - <http://lawrenceks.org/subscriptions>



DCFPC meetings in 2017 included the KU Biological Field Station and member Lee Broyles's home & cattle ranch

Contact

George Diepenbrock
 KU News Service
 785-864-8853



gdiepenbrock@ku.edu

Follow @gdiepenbrock

Development of local food systems in Kansas, Missouri help bridge gap among people with different moral, environmental views

Wed, 08/16/2017



Map of Kansas Food and Farm Councils

LAWRENCE — One of the major barriers that environmentalists face in trying to implement sustainable practices is getting disparate groups to agree on what is the best course of action.

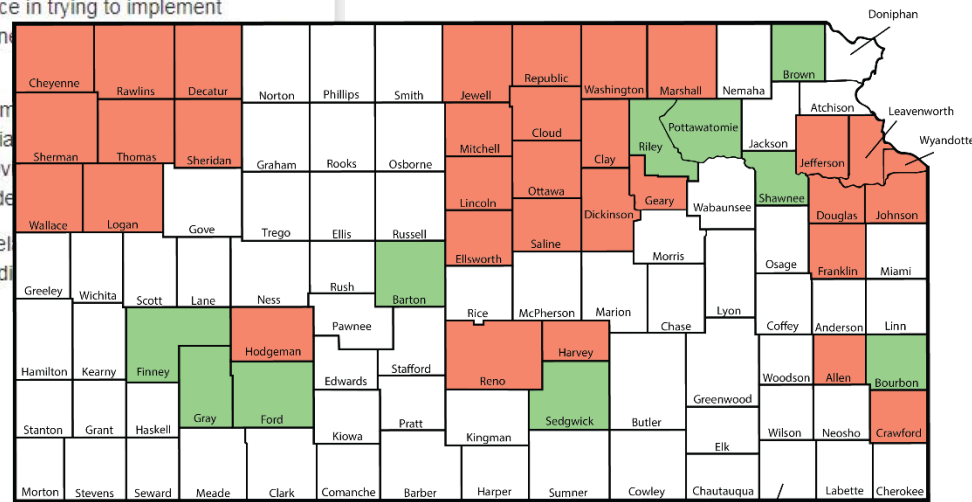
Work by a University of Kansas researcher shows that the development of local food systems in Kansas and Missouri could help bridge some of those gaps, especially by providing sustainable farming knowledge and educating local consumers to find common ground across differing moral orders and environmental ideologies.

"Many of the farmers I talked to expressed being surprised at the religious and moral views of those who were so different than them," said Ruth Stamper, doctoral candidate.

Share

Tweet

<https://today.ku.edu/2017/07/28/development-local-food-systems-kansas-missouri-help-bridge-gap-among-people-different>



■ Current Councils
■ Emerging Councils

Rev. 02/24/2017



<https://kansasallianceforwellness.com/>

Thank you!

Helen Schnoes, AICP
Sustainability & Food Systems
Planner
Douglas County, KS
hschnoes@douglascountyks.org
785-832-5157



FPC member and past-Chair Jill Elmers traveled to the **2017 Lean Farm Summit** with support from the Council's budget to learn about innovative production practices and tools for more efficient growing.



www.douglascountyks.org/fpc